

OBJEKT: August Harrer Nr. 13
 DATUM:

SEITE:

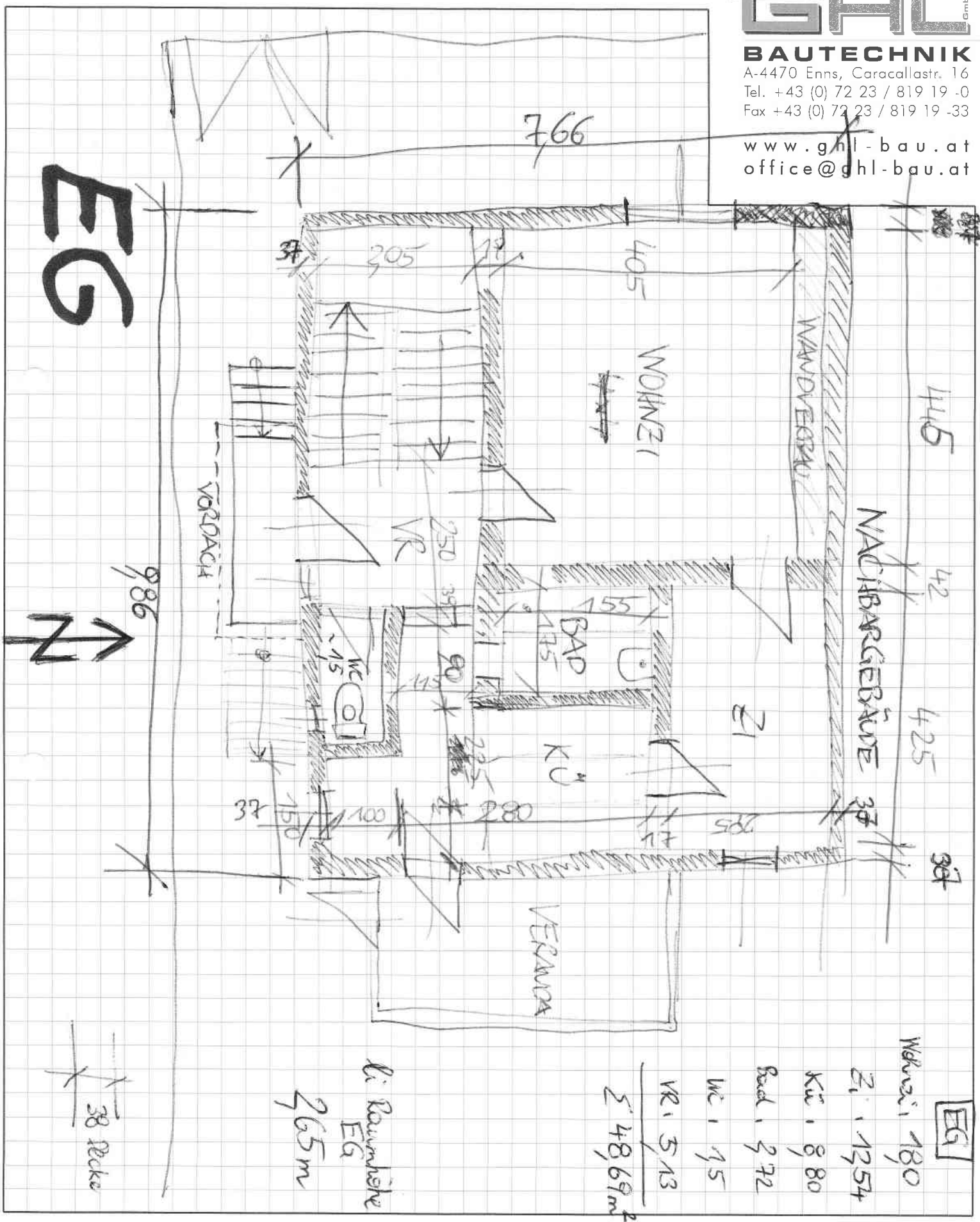
19.2.13
 Bepelg



GHL
Bau GmbH

BAUTECHNIK
 A-4470 Enns, Caracallastr. 16
 Tel. +43 (0) 72 23 / 819 19 -0
 Fax +43 (0) 72 23 / 819 19 -33

www.ghl-bau.at
 office@ghl-bau.at



Wohnz.	180
Zi.	1254
Kü.	880
Bad.	372
WC.	15
VR.	513
Σ	4869 m²

li Raumhöhe
 EG
 265m

38 Decke

OBJEKT:

DATUM:

SEITE:



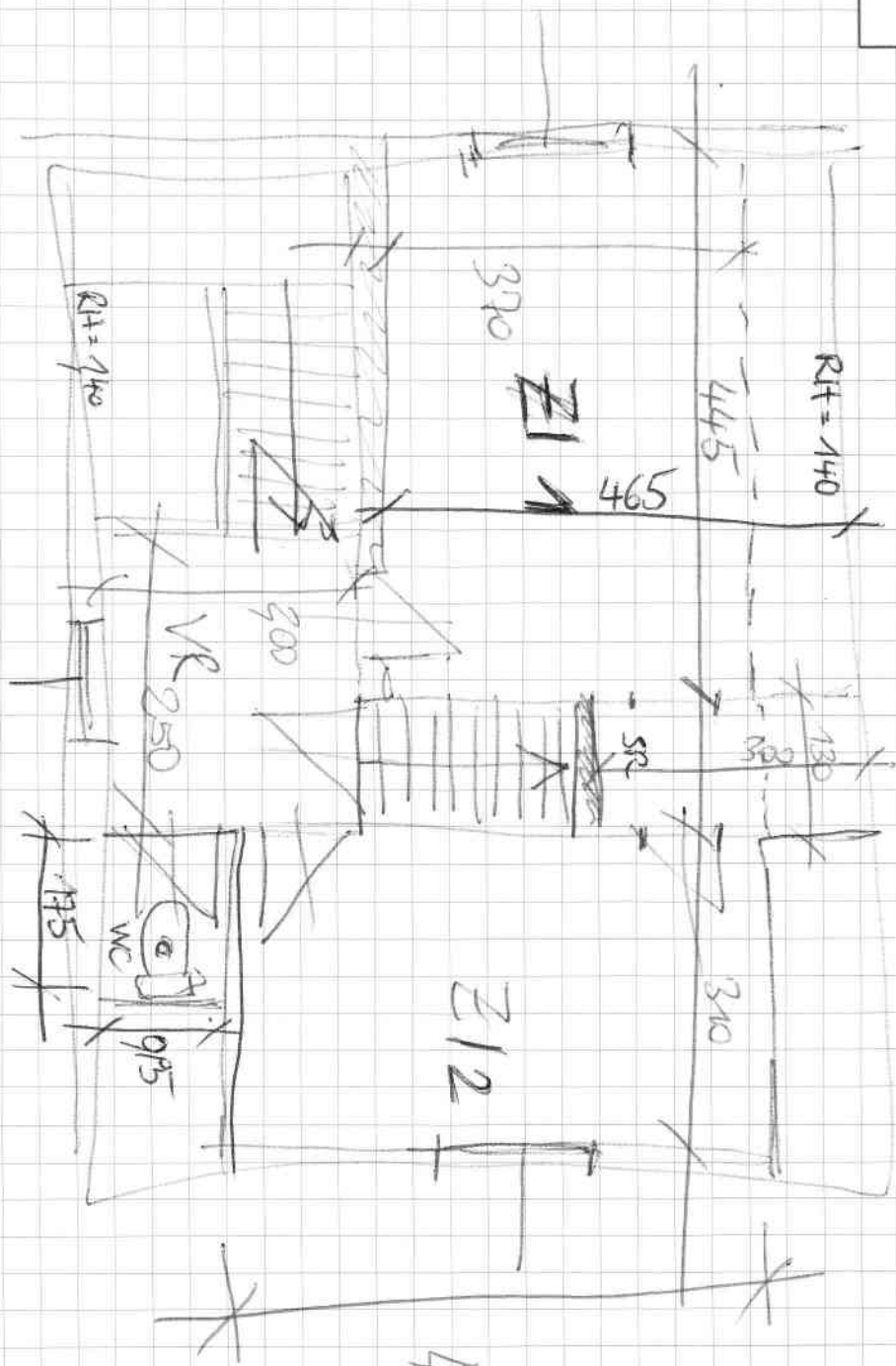
GHL GmbH

BAUTECHNIK

A-4470 Enns, Caracallastr. 16
Tel. +43 (0) 72 23 / 819 19 -0
Fax +43 (0) 72 23 / 819 19 -33

www.ghl-bau.at
office@ghl-bau.at

06

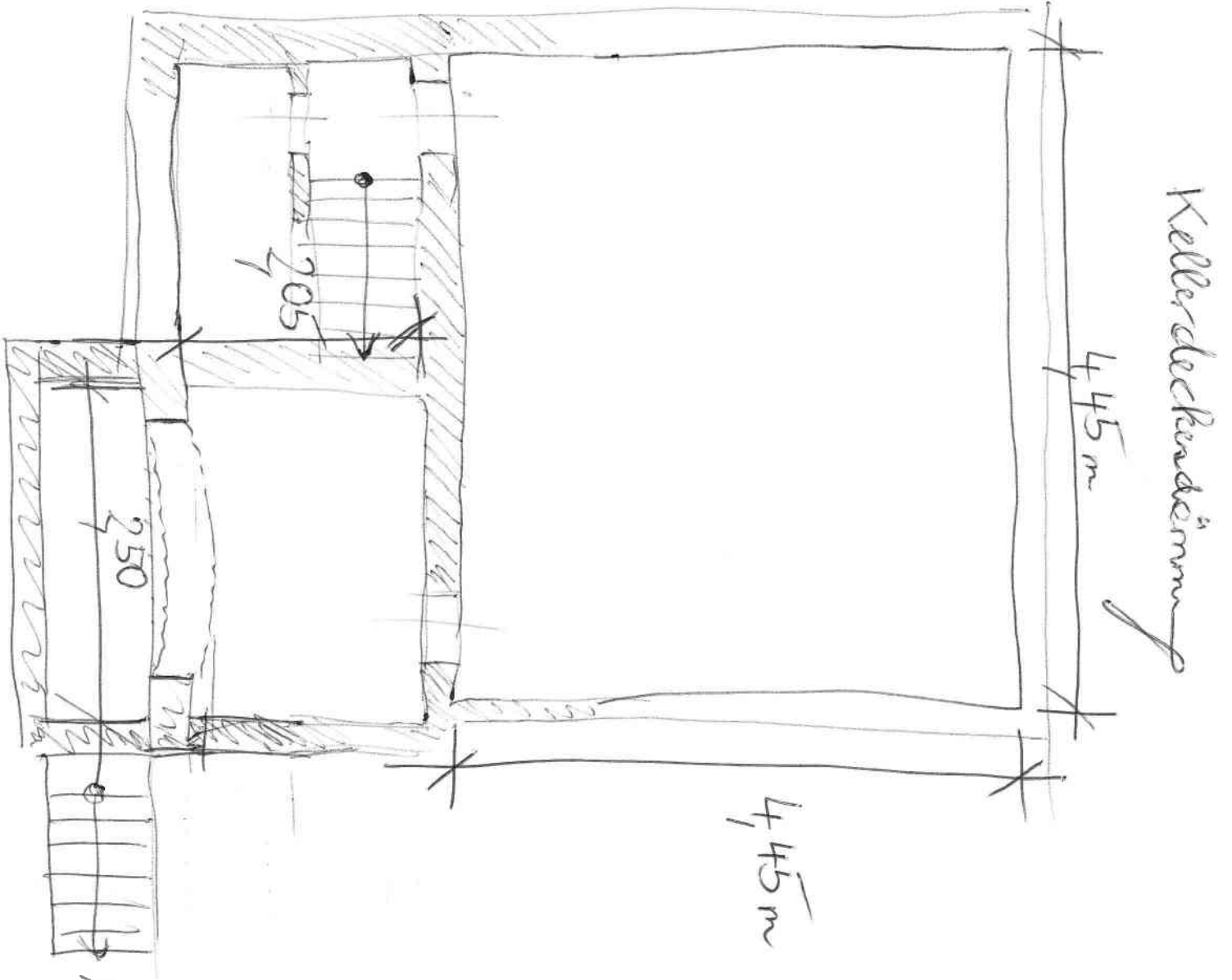


liche RT = 235m

Z1	1647
Z2	1519
SR	390
VR	500
WC	1,50
Σ	42 m²

061

KG

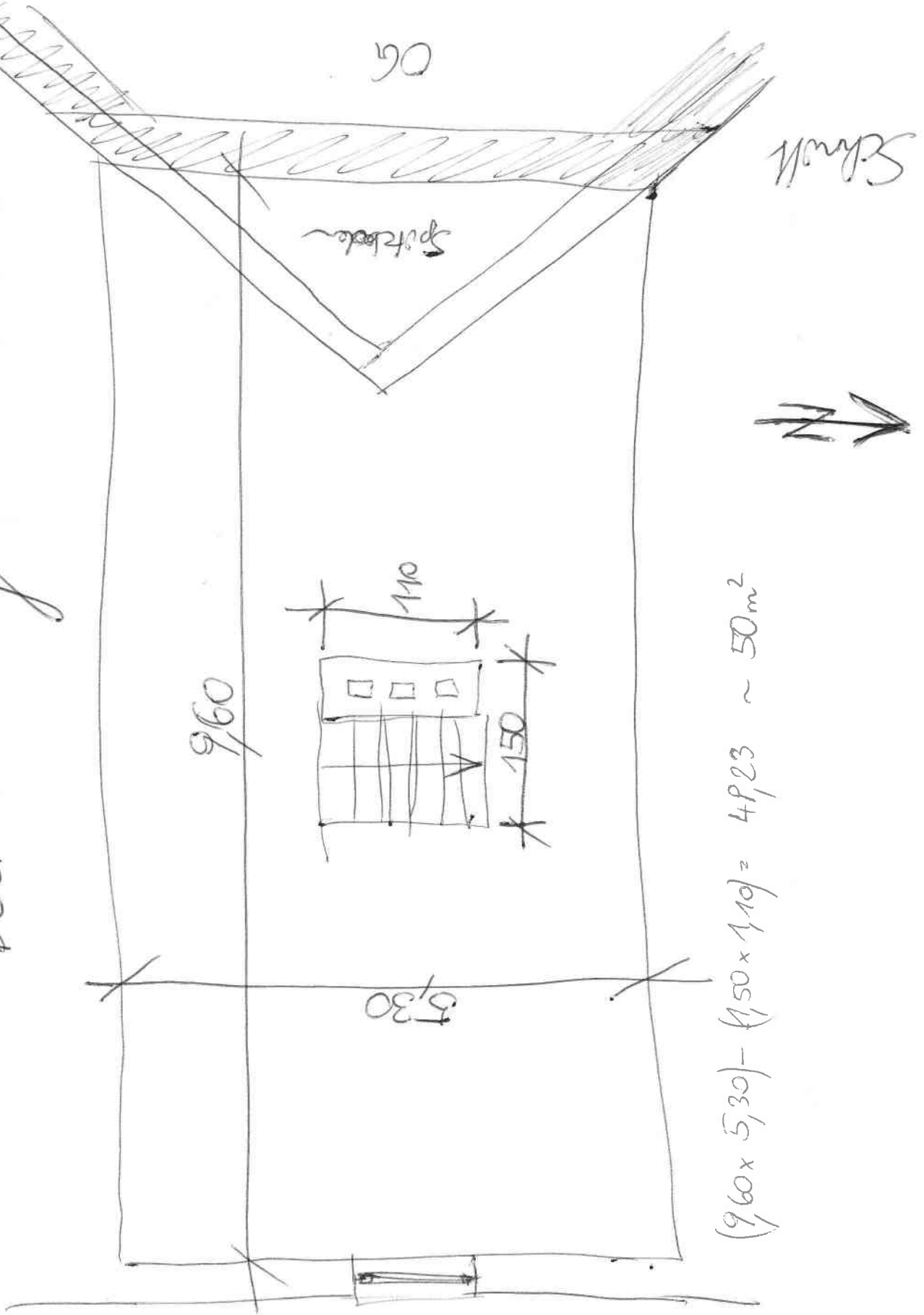


Austrittsloge

$$4,45^2 = 19,80$$
$$2,05 \times 2,50 = \frac{5,13}{25 m^2}$$

SPITZBODEN

Deckendämmung



$$(9,60 \times 5,30) - (1,50 \times 1,10) = 48,23 \sim 50 \text{m}^2$$